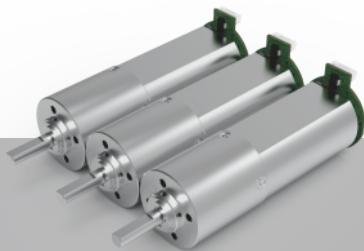


16  
mm

Metal  
五金



# ZWBMD016016

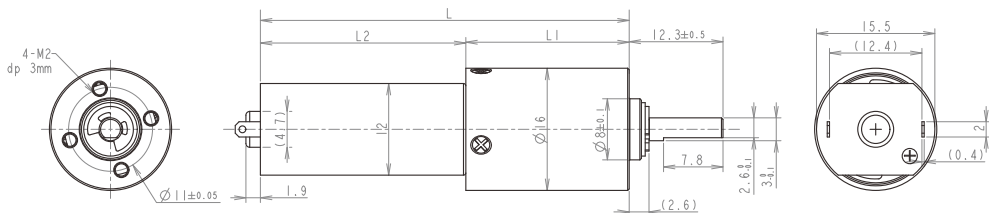
## 齿轮箱规格 Gearbox Specifications

外径 Outer diameter	16mm	轴承 Bearing	含油轴承 Porous bearing	滚动轴承 Rolling bearing
材质 Material	五金 Metal	轴向窜动 Axial endplay	≤0.3mm	≤0.3mm
旋转方向 Direction of rotation	cw & ccw	输出轴径向负载 Radial loading on output shaft	≤20N	≤30N
齿轮箱回程差 Gear backlash	≤2°	工作温度 Operating temperature range	-30 ~ +100°C	

## 齿轮级数 Gearbox Stages

	1	2	3	4
减速比 Reduction ratio	4 / 6	16 / 24 / 36	64 / 96 / 144 / 216	256 / 384 / 576 / 864 / 1296
最大容许扭力 (gf.cm) Max rated torque of gearbox (gf.cm)	5000	5000	5000	5000
瞬间容许力矩 (gf.cm) Instant torque of gearbox (gf.cm)	10000	10000	10000	10000
齿轮箱效率 (%) Gearbox efficiency (%)	90	85	80	75
长度 (mm) Gearbox length L1 (mm)	11.5	14.8	18.1	21.4

## 技术插图 | Technical Drawing



## 马达规格参数 Motor Specifications

马达(可选择) Motor type (optional)	直流有刷电机、直流无刷电机、空心杯电机、步进电机 Brushed DC motor, Brushless DC motor, Coreless motor, Stepper motor	输入速度 Input speed	≤15000rpm
电压(可选择) Voltage (optional)	3-24V	电流 Current	300mA max

参考数据(马达定义值): 6v 8000rpm 下表根据马达定义值测试, 数据只作为参考值

型号 Model	Rated Speed 额定转速	Max Speed 最高转速	Max Rated Torque 额定容许力矩	Max Instant Torque 瞬间容许力矩	Reduction Ratio 减速比	Gearbox Length 减速箱长 L1	Overall Length 总长 L
	rpm	rpm	gf.cm	gf.cm		mm	mm
ZWBMD016016-4	1875	7500	5000	10000	4	11.5	38.4
ZWBMD016016-6	1250	5000	5000	10000	6		
ZWBMD016016-16	469	1875	5000	10000	16	14.8	41.7
ZWBMD016016-24	313	1250	5000	10000	24		
ZWBMD016016-36	208	833	5000	10000	36		
ZWBMD016016-64	117	469	5000	10000	64	18.1	45.0
ZWBMD016016-96	78	313	5000	10000	96		
ZWBMD016016-144	52	208	5000	10000	144		
ZWBMD016016-216	35	139	5000	10000	216		
ZWBMD016016-256	29	117	5000	10000	256	21.4	48.3
ZWBMD016016-384	20	78	5000	10000	384		
ZWBMD016016-576	13	52	5000	10000	576		
ZWBMD016016-864	9	35	5000	10000	864		
ZWBMD016016-1296	6	23	5000	10000	1296		

注: 可根据客户要求定制 Please contact us for customized products