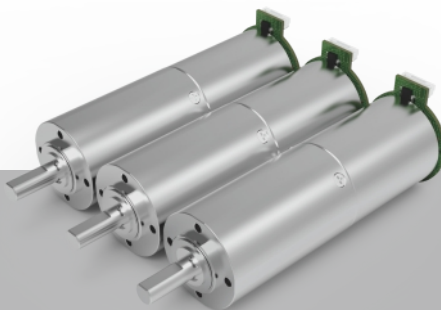


28
mm

Metal
五金



ZWBMD028028

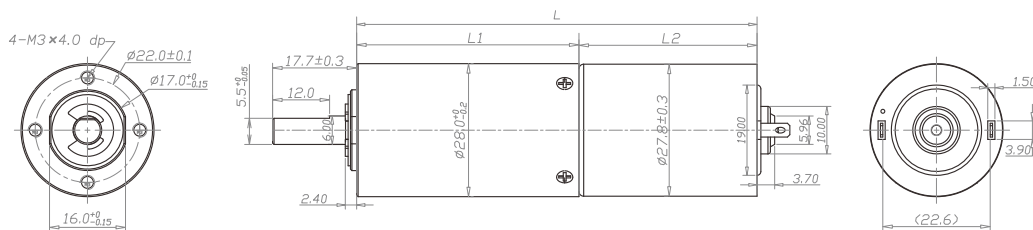
齿轮箱规格 Gearbox Specifications

外径	Outer diameter	28mm	轴承	Bearing	含油轴承	Porous bearing	滚动轴承	Rolling bearing
材质	Material	五金 Metal	轴向窜动	Axial endplay	≤0.1mm		≤0.1mm	
旋转方向	Direction of rotation	cw & ccw	输出轴径向负载	Radial loading on output shaft	≤120N		≤170N	
齿轮箱回程差	Gear backlash	≤2° 可定制 Customizable	工作温度	Operating temperature range	-30 ~ +100°C			

齿轮级数 Gearbox Stages

		1	2	3	4
减速比	Reduction ratio	4 / 6	16 / 24 / 36	64 / 96 / 144 / 216	256 / 384 / 576 / 864 / 1296
最大容许扭力 (gf.cm)	Max rated torque of gearbox (gf.cm)	40000	40000	40000	40000
瞬间容许力矩 (gf.cm)	Instant torque of gearbox (gf.cm)	120000	120000	120000	120000
齿轮箱效率 (%)	Gearbox efficiency (%)	80	64	51	41
长度 (mm)	Gearbox length L1 (mm)	21.3	29.8	38.3	46.8

技术插图 | Technical Drawing



马达规格参数 Motor Specifications

马达(可选择)	Motor type (optional)	直流有刷电机、直流无刷电机、步进电机 Brushed DC motor, Brushless DC motor, Stepper motor	输入速度	Input speed	≤15000rpm
电压(可选择)	Voltage (optional)	3-24V	电流	Current	400mA max

参考数据(马达定义值): 24v 7700rpm 下表根据马达定义值测试, 数据只作为参考值

型号 Model	Rated Speed 额定转速	Max Speed 最高转速	Max Rated Torque 额定容许力矩	Max Instant Torque 瞬间容许力矩	Reduction Ratio 减速比	Gearbox Length 减速箱长 L1	Overall Length 总长 L
	rpm	rpm	gf.cm	gf.cm		mm	mm
ZWBMD028028-4	1658	3000	40000	120000	4	21.3	58.8
ZWBMD028028-6	1105	2000	33000	100000	6		
ZWBMD028028-16	413	750	40000	120000	16	29.8	67.3
ZWBMD028028-24	276	500	40000	120000	24		
ZWBMD028028-36	181	333	33000	100000	36		
ZWBMD028028-64	104	188	40000	120000	64	38.3	75.8
ZWBMD028028-96	69	125	40000	120000	96		
ZWBMD028028-144	46	83	40000	120000	144		
ZWBMD028028-216	31	56	33000	100000	216		
ZWBMD028028-256	26	47	40000	120000	256	46.8	84.3
ZWBMD028028-384	17	31	40000	120000	384		
ZWBMD028028-576	12	21	40000	120000	576		
ZWBMD028028-864	8	14	40000	120000	864		
ZWBMD028028-1296	5	9	33000	100000	1296		

注: 可根据客户要求定制 Please contact us for customized products