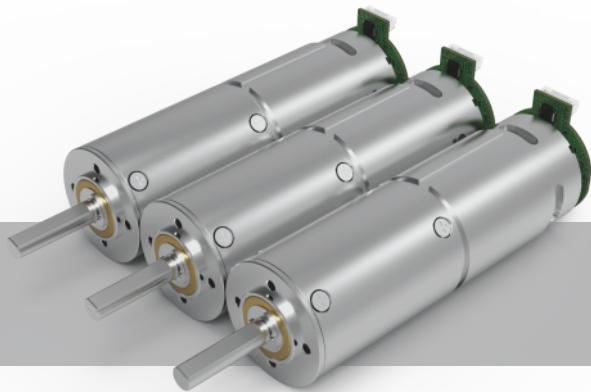


38
mmMetal
M
五金

ZWMD038038

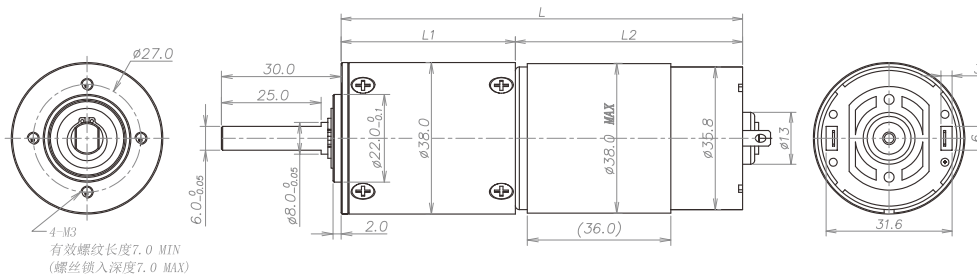
齿轮箱规格 Gearbox Specifications

外径	Outer diameter	38mm	轴承	Bearing	滚动轴承 Rolling bearing
材质	Material	五金 Metal	轴向窜动	Axial endplay	≤0.1mm
旋转方向	Direction of rotation	cw & ccw	输出轴径向负载	Radial loading on output shaft	≤300N
齿轮箱回程差	Gear backlash	≤2° 可定制 Customizable	工作温度	Operating temperature range	-20 ~ +100°C

齿轮级数 Gearbox Stages

		1	2	3	4
减速比	Reduction ratio	4 / 6	16 / 25 / 39	64 / 100 / 156 / 244	256 / 400 / 625 / 977 / 1526
最大容许扭力 (gf.cm)	Max rated torque of gearbox (gf.cm)	80000	80000	80000	80000
瞬间容许力矩 (gf.cm)	Instant torque of gearbox (gf.cm)	240000	240000	240000	240000
齿轮箱效率 (%)	Gearbox efficiency (%)	90	85	80	75
长度 (mm)	Gearbox length L1 (mm)	30.7	43.7	56.7	69.7

技术插图 | Technical Drawing



马达规格参数 Motor Specifications

马达(可选择) Motor type (optional)	直流有刷电机、直流无刷电机、步进电机 Brushed DC motor, Brushless DC motor, Stepper motor	输入速度 Input speed	≤15000rpm
电压(可选择) Voltage (optional)	3-24V	电流 Current	300mA max

参考数据 (马达定义值): 24v 6100rpm 下表根据马达定义值测试, 数据只作为参考值

型号 Model	Rated Speed 额定转速	Max Speed 最高转速	Max Rated Torque 额定容许力矩	Max Instant Torque 瞬间容许力矩	Reduction Ratio 减速比	Gearbox Length 减速箱长 L1	Overall Length 总长 L
	rpm	rpm	gf.cm	gf.cm		mm	mm
ZWMD038038-4	1525	7500	80000	240000	4	30.7	87.7
ZWMD038038-6.25	976	4800	80000	240000	6.25		
ZWMD038038-16	381	1875	80000	240000	16	43.7	100.7
ZWMD038038-25	244	1200	80000	240000	25		
ZWMD038038-39	156	769	80000	240000	39		
ZWMD038038-64	95	469	80000	240000	64	56.7	113.7
ZWMD038038-100	61	300	80000	240000	100		
ZWMD038038-156	39	192	80000	240000	156		
ZWMD038038-244	25	123	80000	240000	244		
ZWMD038038-256	24	117	80000	240000	256	69.7	126.7
ZWMD038038-400	15	75	80000	240000	400		
ZWMD038038-625	10	48	80000	240000	625		
ZWMD038038-977	6	31	80000	240000	977		
ZWMD038038-1526	4	20	80000	240000	1526		

注: 可根据客户要求定制 Please contact us for customized products